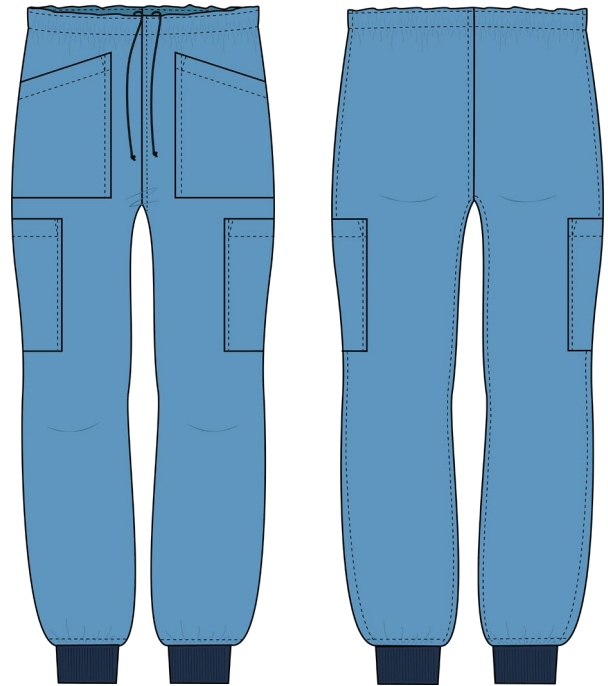


Product Sheet

Model: Surgical trousers OPTIMAL MF864
Article no: 2202-11 864 00

Fabric: Microfiber
Comp: 99% polyester/1% carbon (antistat)
Weigh: 165 g/m²
Colour: Blue

Cuff: 100% polyester, navy



Microfiber is certified according to EN13795-2:2019

Microfiber Oeko-tex class I and Bluesign

Cuff Oeko-tex class I



cm

Size	Waist unstretched	Waist stretched	Crotch at front	Crotch at bak	Inseam length incl/excl. Cuff	Thigh width at crotch	Width above cuff
XXSMALL	62	92	28	44	86/78	60	41
XSMALL	67	100	29	45	86/78	65	42
SMALL	73	108	30	46	86/78	70	43
MEDIUM	80	118	31	47	89/81	76	44
LARGE	87	128	33	50	89/81	82	47
XLARGE	95	140	34	52	92/84	89	50
XXLARGE	104	152	36	54	92/84	96	53
3XLARGE	112	164	38	56	95/87	103	56

Tolerance: +/-1cm

Product Sheet

Fabric Composition	99/1% PES/Carbon	carbon grid 5x5mm	
Weave / Threading	Twill		
Finish	Pure		
Number of Threads / cm			
Warp		54 +/-1	
Weft		51 +/-1	
Usable width (cm)		Min 150	
SS-EN 1773			
Weight (g/m ²)		165	+/-5%
SS-25 12 69			
		Colourchange	Staining against PES
Colourfastness against washing 60°C		4/5	4
SS-EN ISO 105-C06			
Colourfastness against rubbing	Dry		4
SS-EN ISO 105-X12	Wet		4
Colourfastness against perspiration	Acid	4/5	4
SS-EN ISO 105-E04	Alkali	4/5	4
Norm according to EN13795			
Shrinkage after washing 60°C (%)	warp	-1,5	
SS-EN ISO 6330	weft	-1,5	
Breaking strengt (N/5cm)	warp	≥1000	>20
SS-EN ISO 13934-1:1999	weft	≥1200	>20
Elongation at break (%)	warp	35 +/-5	
SS-EN ISO 13934-1:1999	weft	40 +/-5	
Tear strength (N)	warp	≥18	
SS-EN ISO 13937-2	weft	≥20	
Air permeability (l/m ² /s)		~30	
SS-EN ISO 9237			
Seamslippage	warp	250	
SIS 65 00 37	weft	250	
Pilling	5000 turns	4	
EN ISO 12945	7000 turns	4	
Abrasion (r)		40000	
EN ISO 12947-1:1998			
Norm according to EN13795			
Bursting strength (kPa)		≥1900	>40
EN-13938-2			
Resistance to microbial penetration-dry (CFU)		11	<300
EN-ISO 22612			
Cleanliness- Microbial (Log ₁₀ (CFU/100cm ²))		<9	<300
EN 1174 / EN-ISO 11737-1			
Cleanliness-particular matter (IPM)		2,2	<3,5
EN 9073-10			
LINTING (Log ₁₀ (lint count))		2,3	<4
EN 9073-10			
Surface Resistvity	face side	3x10 ⁷	
EN 1149-1:2006			
Static decay (sec)		<0,1	
EN 61340-5-1 1000V-100V			