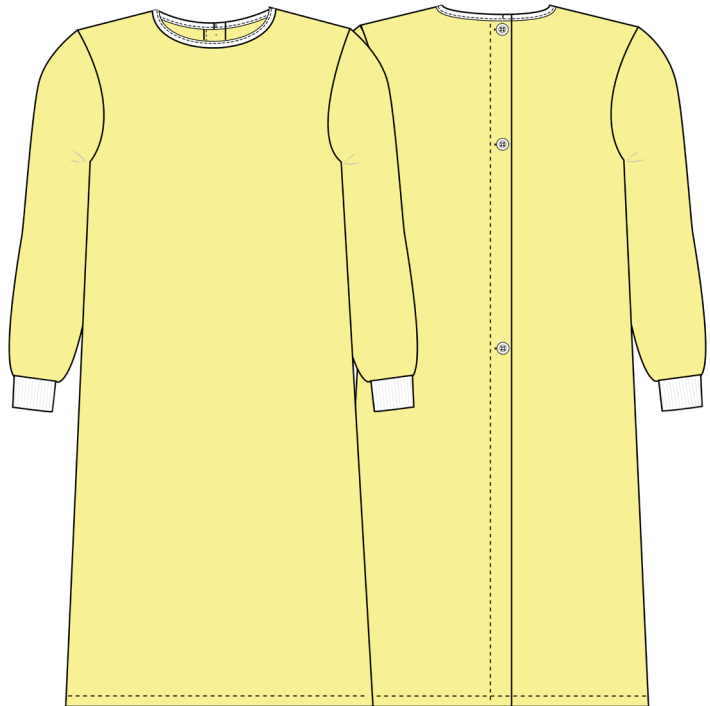


Product sheet

Model: Protective coat
Article no: 1590-30 893 00

Material: Microfiber with barrier
Material no: 873V-105
Comp: 99% polyester/1% carbon
Weight: ca 92 g/m²
Colour: Yellow
Cuff: 100% polyester, white

Certificate
Microfiber: Oeko-tex class II, Bluesign
Cuff: Oeko-tex class I



cm

Size	Back length	Chest	Shoulder	Bottom width	Sleeve incl/excl cuff	Sleeve length above cuff	Upper sleeve width
XSMALL	110	112	18	132	60/49	34	45
SMALL	112	122	20	142	61/50	35	48
MEDIUM (50-80kg)	114	132	22	152	62/51	36	51
LARGE (80-110kg)	118	152	24	172	64/53	37	56
XLARGE	122	172	26	192	66/55	38	61

Product sheet

Fabric:	BARRIER CARBON PLAIN STRIPE
Finish:	BARRIER FINISH
Content:	99% POLY 1% CARBON
Finished Construction:	158 x 99 ends x picks x in 62 x 39 ends x picks x cm
Stretch %:	2% Warp 2% Fill
Weight:	2.71 oz/yd ² 92.00 gr/m ²

<u>Test Name, Reference and KTEST #</u>	<u>Test Detail</u>	<u>Specification</u>	<u>Applicable to:</u>
Colorfastness to Crocking AATCC 8 A-03	Dry Wet	≥ 4.0 ≥ 3.0	All dark shades All dark shades
Colorfastness to Light AATCC 16 - 1993 option A A-05	20 hours	≥ 4.0	All lots
Colorfastness to Perspiration - Acid AATCC 15 A-06	Shade Change Staining	≥ 4.0 ≥ 3.0	All lots Grade only Cotton & Polyester fibers
Colorfastness to Washing - IIIA AATCC 61 - 1993 A-08	Shade Change Staining	≥ 4.0 ≥ 4.0	All lots Grade only Cotton & Polyester fibers
Colorfastness to Washing - IVA AATCC 61 - 1993 A-08	Shade Change	≥ 3.0	All lots
170°F Wash Shrinkage B-02	3 wash/dry cycles at 170°F	≤ 4.0	All lots
Appearance After Laundering C-01	3 wash/dry cycles at 170°F	≥ 3.0	Development Lots Only
Seam Slippage ASTM D434 C-06		≥ 20 lb. ≥ 30 lb.	Fabric weight ≤ 3.0 oz./yd ² Fabric weight > 3.0 oz./yd ²
Stretch and Recovery ASTM D 3107 C-07	Stretch	Varies with Style	All lots
Tensile Strength ASTM D 5034 C-09		≥ 30 lb. ≥ 50 lb.	Fabric weight ≤ 3.0 oz./yd ² Fabric weight > 3.0 oz./yd ²
Texture Distortion ASTM D1336 C-10	2 lb. load	0.00 in.	Development Lots
Tongue Tear ASTM D2261 C-11		≥ 1.5 lb. ≥ 4.0 lb. 20X IVA Washes ≥ 1.0 lb.	Fabric weight ≤ 3.0 oz./yd ² Fabric weight > 3.0 oz./yd ² Fabric weight ≤ 3.0 oz./yd ² (Dev. Lots)
Suter Hydrostatic / ISO 811 (1 cm/sec)	Original	≥ 500 mm	All lots

Product sheet

<u>Test Name, Reference and KTEST #</u>	<u>Test Detail</u>	<u>Specification</u>	<u>Applicable to:</u>
AATCC 127 D-01	1X IVA wash (5X)** 5X IVA wash (25X)** 10X IVA wash (50X)** 15X IVA wash (75X)** 20X IVA wash (100X)**	≥ 500 mm None None None ≥ 400 mm	
Impact Penetration AATCC 42 D-02	Original 1X IVA wash (5X)** 5X IVA wash (25X)** 10X IVA wash (50X)** 15X IVA wash (75X)** 20X IVA wash (100X)**	≤ 0.1 g. None None None None None	By customer and Development Lots
Rain Test AATCC 35 D-04	3 ft/5 min. Original 1X IVA wash (5X)** 5X IVA wash (25X)** 10X IVA wash (50X)** 15X IVA wash (75X)** 20X IVA wash (100X)**	None None None None None None None	Development Lots Only
Spray Test AATCC 22 D-05 D-04	Original 1X IVA wash (5X)** 5X IVA wash (25X)** 10X IVA wash (50X)** 15X IVA wash (75X)** 20X IVA wash (100X)**	≥ 90 ≥ 90 None None None None	All lots
Air Porosity ASTM D737 E-03	Original 1X IVA wash (5X)** 5X IVA wash (25X)** 10X IVA wash (50X)** 15X IVA wash (75X)** 20X IVA wash (100X)**	None None None None None None	Development Lots Only
Moisture Vapor Transmission ASTM E96 (B) E-10	Original 1X IVA wash (5X)** 5X IVA wash (25X)** 10X IVA wash (50X)** 15X IVA wash (75X)** 20X IVA wash (100X)**	None None None None None None	Development Lots Only